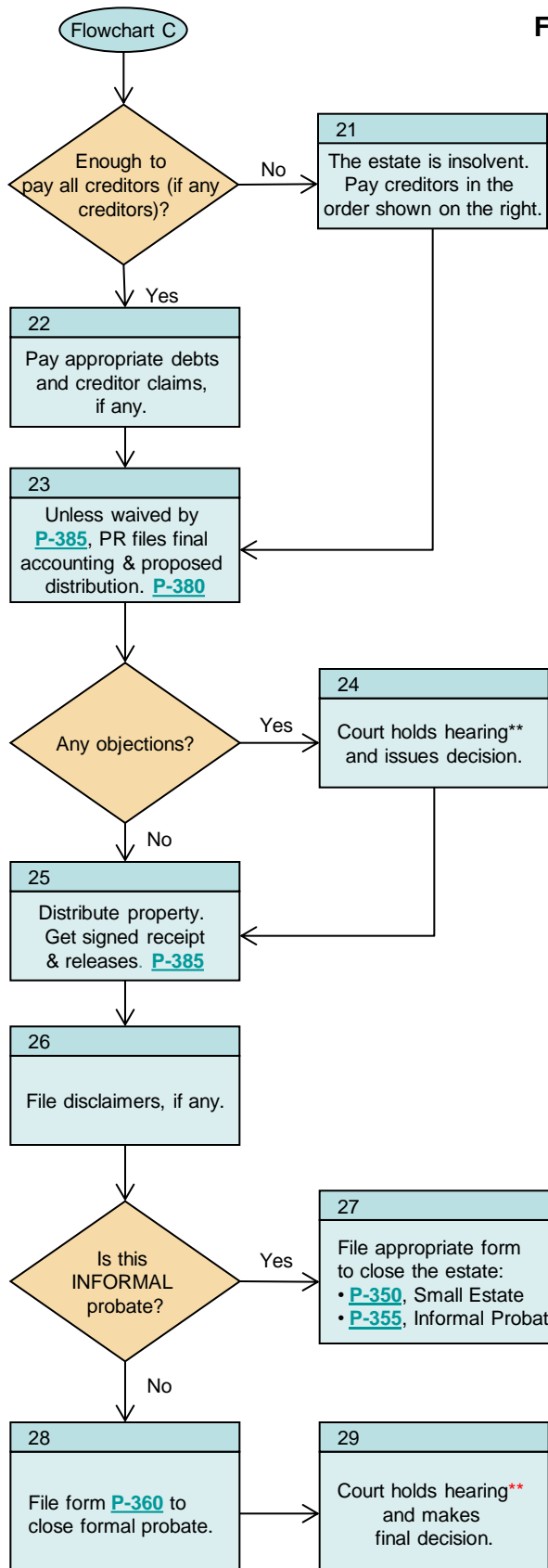


FLOWCHART C—CLOSING THE CASE



ORDER OF CREDITOR PAYMENT (AS 13.16.470)

1. Secured creditor claim
2. Probate expenses
3. Reasonable funeral expenses
4. Debts and taxes with priority under federal law and past due child support (see AS 13.16.470 for exceptions)
5. Medical and hospital expenses of the last illness
6. Debts and taxes with priority under state law
7. All other claims

Go [here](#) to see an example of how creditor payments are calculated.

**You will be required to prove your case at this and other hearings by presenting evidence. You may want to call witnesses. Click [here](#) for more information.