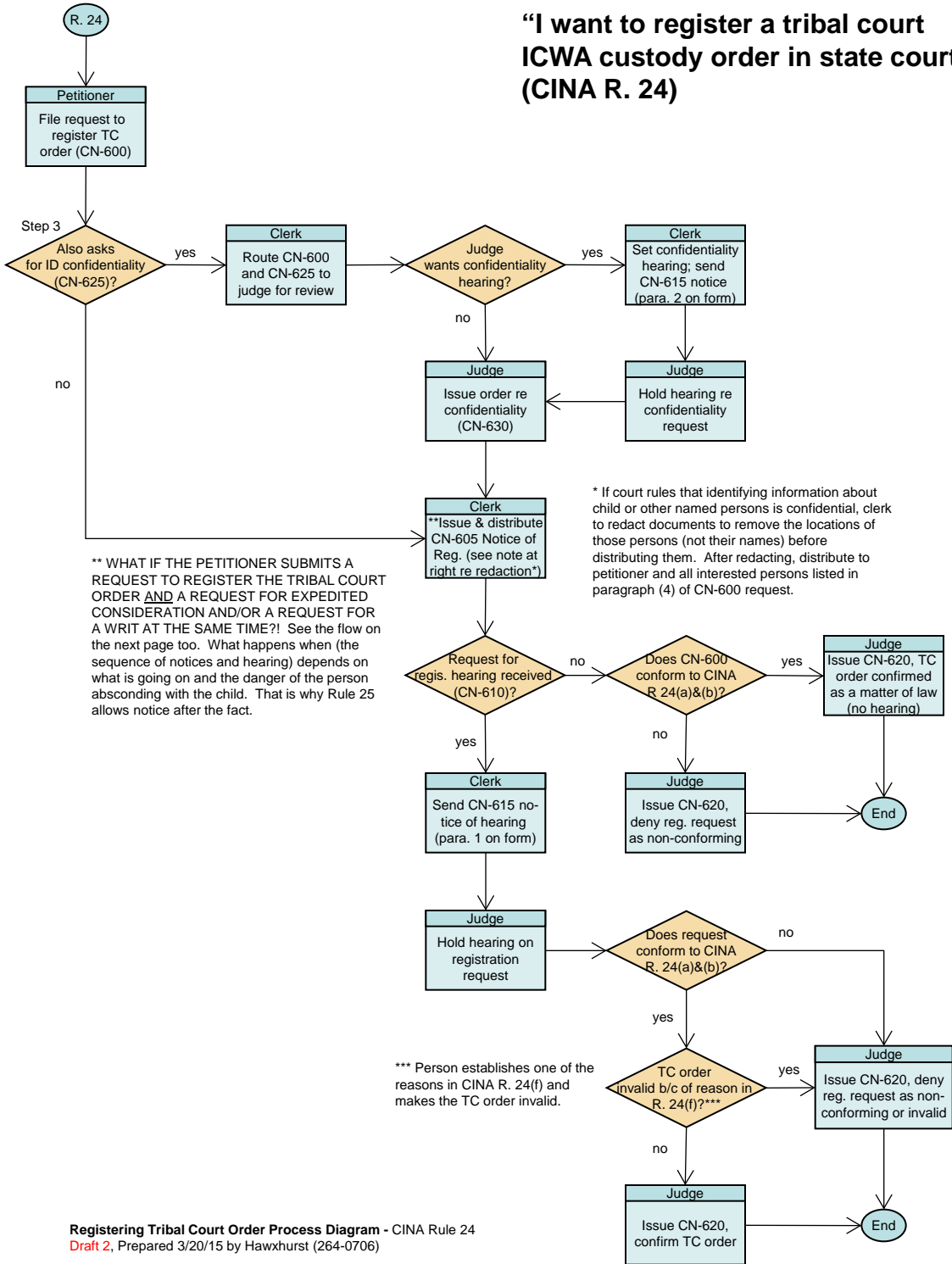
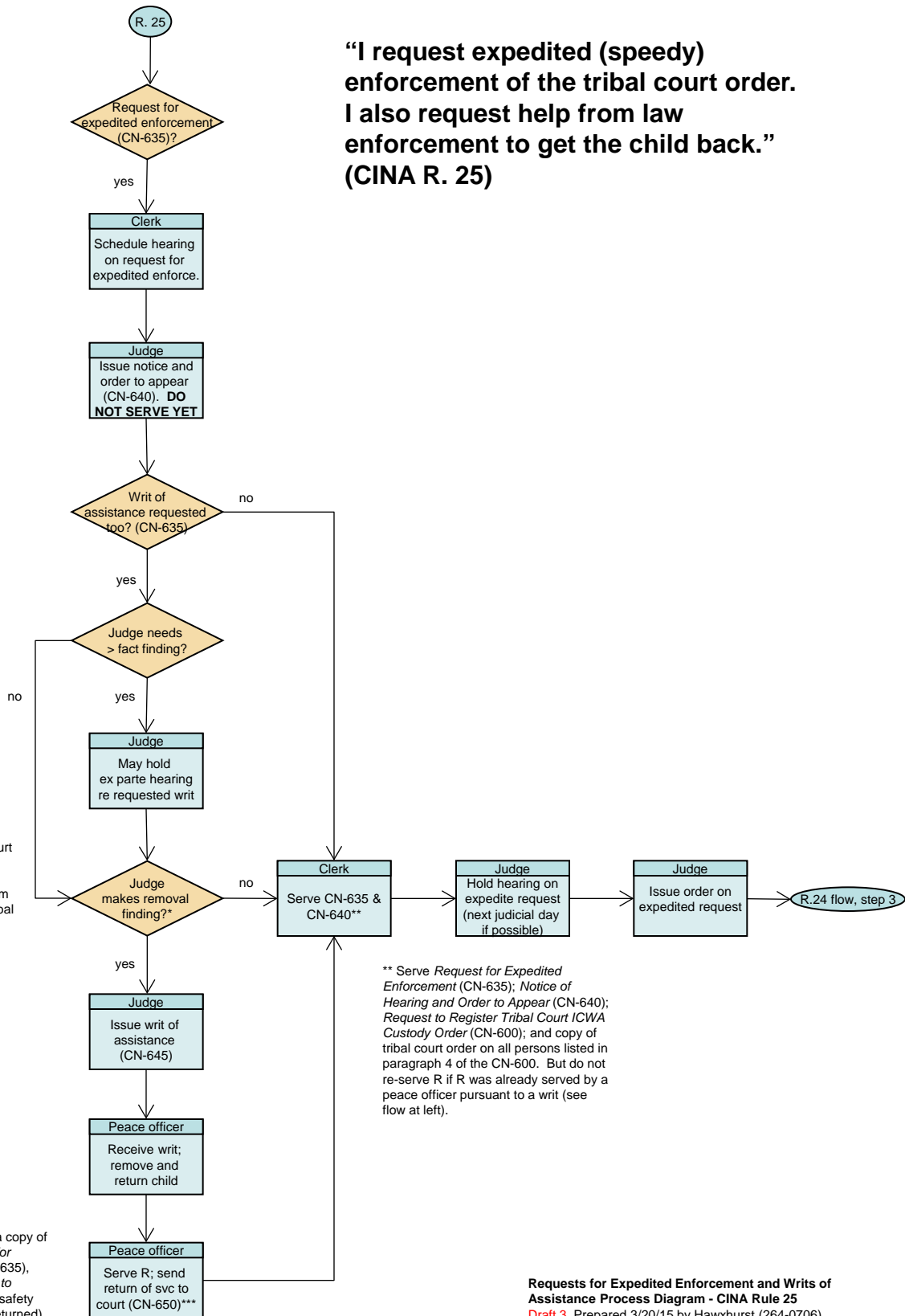


# “I want to register a tribal court ICWA custody order in state court.” (CINA R. 24)





**“I request expedited (speedy) enforcement of the tribal court order. I also request help from law enforcement to get the child back.” (CINA R. 25)**

\* Removal finding: "If the court finds that a child has been removed or is in immediate danger of being removed from the person with whom the tribal court ordered placement, the court may issue a writ of assistance..." CINA R. 25(c).

\*\*\* Peace officer to serve R a copy of the Writ (CN-645), Request for Expedited Enforcement (CN-635), Notice of Hearing and Order to Appear (CN-640), and other safety orders (AFTER the child is returned).

\*\* Serve Request for Expedited Enforcement (CN-635); Notice of Hearing and Order to Appear (CN-640); Request to Register Tribal Court ICWA Custody Order (CN-600); and copy of tribal court order on all persons listed in paragraph 4 of the CN-600. But do not re-serve R if R was already served by a peace officer pursuant to a writ (see flow at left).